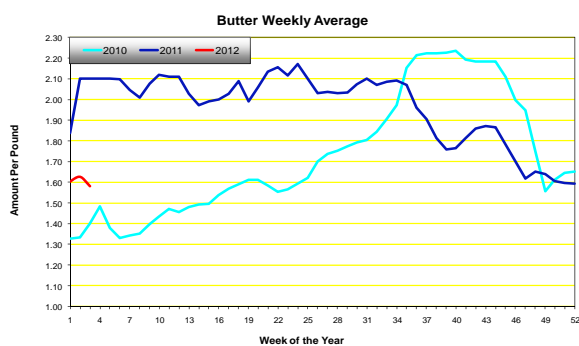
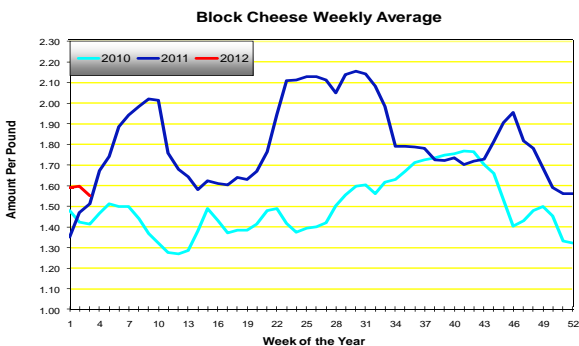
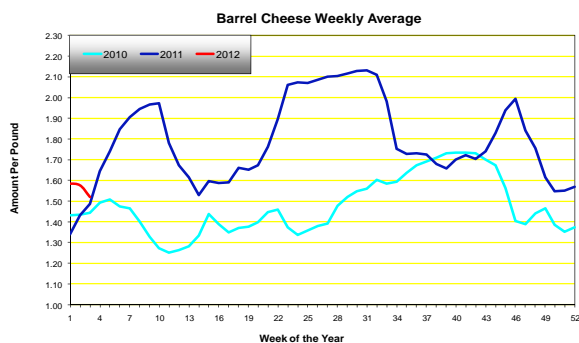


IPAP Market Recap

www.IPAP.com

January 20, 2012

DAILY CHEESE MARKETS								
Market	Prev. Avg.	16-Jan	17-Jan	18-Jan	19-Jan	20-Jan	Wkly. Avg.	Prior Year
BARREL	1.5755	HOLIDAY	1.5375	1.5250	1.5150	1.5025	1.5200	1.4856
BLOCK	1.5960	HOLIDAY	1.5950	1.5550	1.5450	1.5050	1.5500	1.5125
AA BUTTER MARKETS								
Market	Prev. Avg.	16-Jan	17-Jan	18-Jan	19-Jan	20-Jan	Wkly. Avg.	Prior Year
AA	1.6265	HOLIDAY	1.5950	1.5775	1.5775	1.5700	1.5800	2.1000



Cheese—“Cheese prices are trending lower for the second consecutive week. Barrels have retreated \$0.0875 since January 6, while blocks are \$0.1050 lower over the same time period. Barrels closed Friday down \$0.0125 on the day at \$1.5025. Blocks closed at \$1.5050, down \$0.0400 on Friday. Sales have been light this week until Friday with five loads of barrels and eight loads of blocks changing hands at the end of the week. Cheese production is mostly steady with manufacturing milk available. Some plants are slowing production so as not to build excessive inventories. Lower prices have increased interest from buyers for both domestic and export sales.”

Butter—“During the week, the CME cash butter price dipped to the lowest point since December 1, 2010 and closed the week at \$1.5700. Churning schedules across the country are seasonally strong. Cream supplies vary from one region to another, but for the most part are readily available. Current churning often surpasses demand, thus clearances to inventory are increasing. Overall butter demand is often stronger than butter producers and handlers anticipated, thus print butter continues to be generated, but bulk output is heavier. Conversations are starting to occur between buyers and suppliers about upcoming Easter/Passover needs. These early conversations are indicating that some retail feature activity might be in the works, but will probably not be significant.”

For additional dairy market info please see the following

- www.dairy.nu/spot.asp
- www.ams.usda.gov/dairy/
- www.future.aae.wisc.edu/

